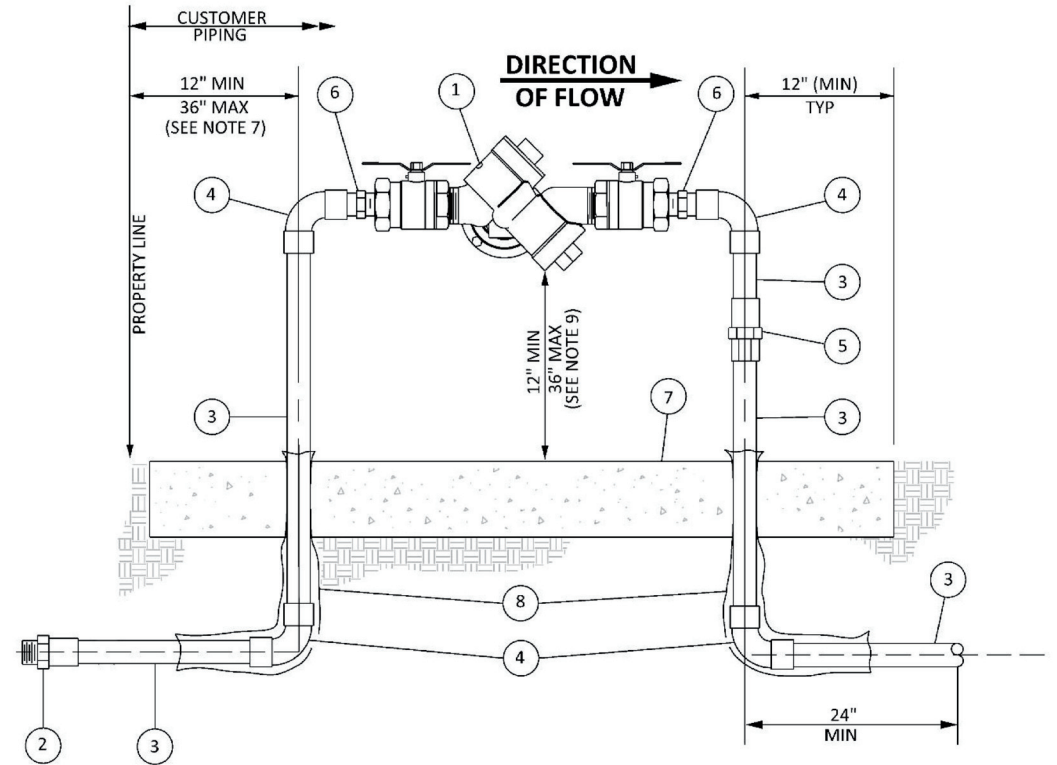


**NOTES:**

1. CUSTOMER MUST INSTALL A USC APPROVED BACKFLOW PREVENTION ASSEMBLY.
2. NUEVO WATER COMPANY MAINTENANCE RESPONSIBILITY STOPS AT THE METER. THE CUSTOMER IS RESPONSIBLE TO TEST AND MAINTAIN THE BACKFLOW PREVENTION ASSEMBLY.
3. ONLY RIVERSIDE COUNTY CERTIFIED BACKFLOW TESTERS LISTED ON THE NUEVO WATER COMPANY APPROVED BACKFLOW TESTER LIST ARE ALLOWED TO TEST BACKFLOW ASSEMBLIES WITHIN NUEVO WATER COMPANY SERVICE AREA.
4. BACKFLOW CERTIFICATION TESTING IS REQUIRED ANNUALLY BUT MAY BE MORE FREQUENTLY AS DEEMED NECESSARY BY NUEVO WATER COMPANY. CERTIFICATION TESTING IS REQUIRED IMMEDIATELY AFTER AN ASSEMBLY IS RELOCATED, REPLACED, OR REPAIRED, AND PRIOR TO ANY NEW INSTALLATION ACCEPTANCE AND WATER DELIVERY PER NUEVO WATER COMPANY.
5. BACKFLOW PREVENTION ASSEMBLY SIZE SHALL MATCH THE DIAMETER OF THE METER IN ACCORDANCE WITH THE UNIFORM PLUMBING CODE; CHAPTER 6, SECTION 610 AS AMENDED, PER TABLE "A", OR AS APPROVED BY NUEVO WATER COMPANY.
6. BACKFLOW PREVENTION ASSEMBLY INSTALLATIONS INCLUDING ALL APPURTENANCES FOR THE SUPPLY OF DOMESTIC WATER SHALL COMPLY WITH THE REQUIREMENTS OF THE CALIFORNIA LEAD-FREE ACT AB1953.
7. BACKFLOW PREVENTION ASSEMBLIES SHALL BE LOCATED AS CLOSE AS PRACTICAL TO THE WATER METER BOX BUT NOT FURTHER THAN 3 FEET UNLESS A VARIANCE IS OBTAINED FROM THE NUEVO WATER COMPANY CROSS-CONNECTION SPECIALIST PRIOR TO INSTALLATION OR RELOCATION.
8. NO OUTLETS, TEES, OR CONNECTIONS SHALL BE ALLOWED BETWEEN THE METER AND THE BACKFLOW PREVENTION ASSEMBLY.
9. BACKFLOW PREVENTION ASSEMBLIES SHALL MAINTAIN A VERTICAL CLEARANCE FROM THE LOWEST POINT OF 12 INCHES (MINIMUM) TO 36 INCHES (MAXIMUM) ABOVE FINISHED GRADE, WITH SIDE AND TOP CLEARANCES OF 12 INCHES (MINIMUM) FROM ANY OBSTRUCTIONS IN ALL DIRECTIONS.
10. POLYETHYLENE ENCASEMENT SHALL BE INSTALLED PER ANSI/AWWA C105/A21.5 REQUIREMENTS. HIGH-DENSITY POLYETHYLENE (HDCLPE) SHALL BE A MINIMUM OF .004 (4 MIL) THICKNESS. LOW-DENSITY POLYETHYLENE (LLDPE) SHALL BE A MINIMUM OF .008 (8 MIL) THICKNESS (OPTIONAL UNLESS SPECIFIED).



**RECOMMENDATIONS:**

1. PARALLEL INSTALLATIONS OF THE SAME TYPE OF BACKFLOW PREVENTION ASSEMBLIES ARE STRONGLY RECOMMENDED FOR ALL FACILITIES REQUIRING UNINTERRUPTED WATER SUPPLY, SUCH AS, HOSPITALS AND SCHOOLS.
2. FREEZE PROTECTION IS RECOMMENDED, BUT THE RELIEF VALVE MUST BE ABLE TO VENT FREELY AND TESTCOCK OPENINGS SHALL BE LEFT EXPOSED. ALLOW FOR ADEQUATE ACCESS TO THE ASSEMBLY FOR TESTING, MAINTENANCE, AND PROPER DRAINAGE.
3. THEFT PROTECTION DEVICES ARE STRONGLY RECOMMENDED FOR BRONZE ASSEMBLIES ALLOWING ADEQUATE ACCESS TO THE ASSEMBLY FOR TESTING, MAINTENANCE, AND PROPER DRAINAGE.

**TABLE "A"**

METER SIZE	BACKFLOW SIZE
5/8" MULTIJET (15 GPM)	3/4"
3/4" MULTIJET (20 GPM)	3/4"
1" MULTIJET (30 GPM)	1"
1 1/2" MULTIJET (75 GPM)	1 1/2"
2" MULTIJET (120 GPM)	2"

ITEM	DESCRIPTION
1	3/4" THRU 2" REDUCED PRESSURE BACKFLOW PREVENTER WITH VALVES
2	COPPER ADAPTER, COPPER SOLDER JOINT X MALE
3	COPPER WATER TUBE, TYPE L HARD OR BRASS
4	COPPER 90° ELBOW WITH COPPER SOLDER JOINTS
5	COPPER UNION WITH COPPER SOLDER JOINTS
6	COPPER ADAPTER, MALE SOLDER X MALE IPT
7	18" WIDE X 4" THICK CONCRETE PAD, LENGTH VARIES PER SIZE (OPTIONAL)
8	POLYETHYLENE ENCASEMENT (SEE NOTE 10)

**NUEVO WATER COMPANY**

REDUCED PRESSURE BACKFLOW PREVENTER  
ASSEMBLY FOR SIZES 3/4" THROUGH 2"  
STANDARD DRAWING

DESIGNED BY *Sinnaro Yos*  
SINNARO YOS, P.E.

DATE